

Puzzled Portland

Why Can't Every City Be Portland?

by Curtis C. Chen (with apologies to The Doubleclicks: <http://youtu.be/n6-P89qG9GY>)

Answer: In the movies and on TV, it can be! Just look at all these shows which were shot on location in Portland or elsewhere in the great state of Oregon. Identify them and you can spell out the reason so many people love this place!



____ _
_ _ _ _ _



____ _
_ _ _ _ _



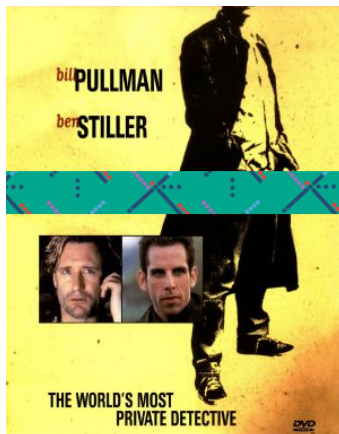
____ _
_ _ _ _ _



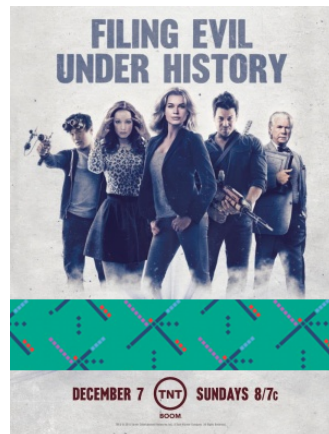
____ _
_ _ _ _ _



____ _
_ _ _ _ _



____ _
_ _ _ _ _



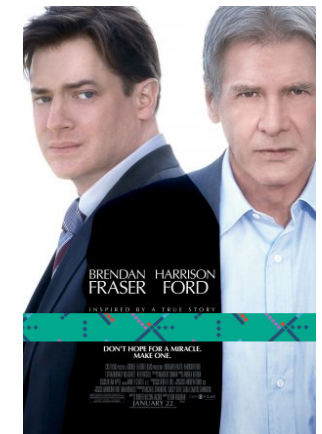
____ _
_ _ _ _ _



____ _
_ _ _ _ _



____ _
_ _ _ _ _



____ _
_ _ _ _ _

This is the location puzzle for Puzzled Pint on July 14, 2015, *our five-year anniversary!*
Use the answer word (all lowercase, no spaces or punctuation) to complete this URL and discover the location details for your city:
<http://www.puzzledpint.com/puzzles/july-2015/portland/>_____