

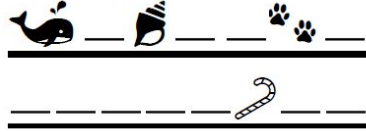
# META

## WHO'S IN WHOVILLE?



The Whos down in Whoville use curious signs to write out their curious writing on lines.  
Now use what you know to help show you the way to find what the Whos have decided to say.

At their break, Guy-Am-I and Sam-I-Am ate:



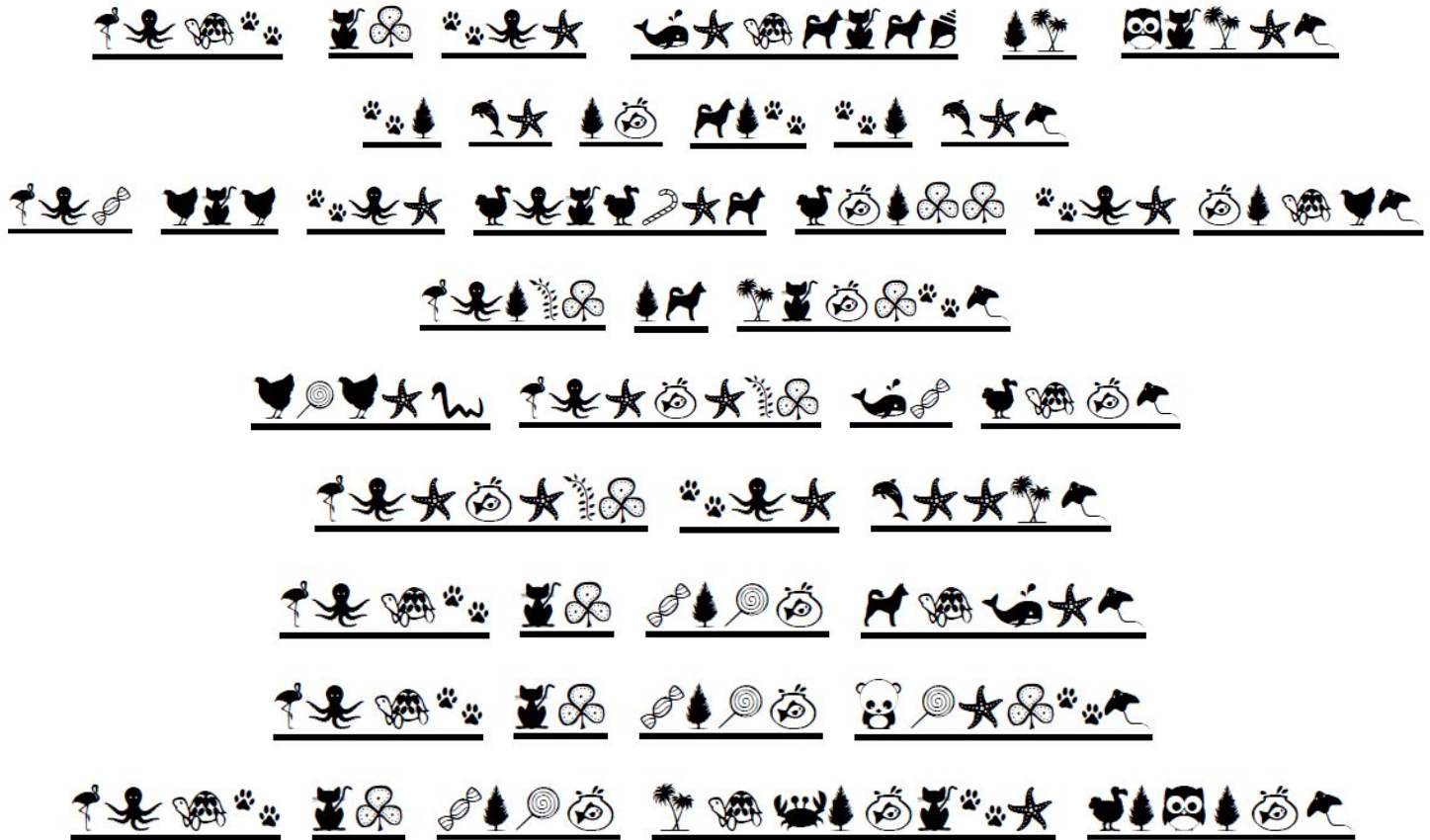
Ba-Nano-Sli-Cro-Sem-Bra prohibits:



McBean's Machines are made from:



Now, at the end of this evening, you hope *this* is:



FINAL :

