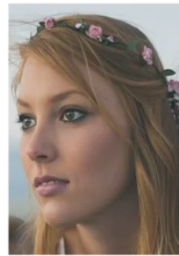




# NORSE CODE

Those pesky mortals; they are so untrustworthy that we have to encode everything we say! Figure out what each question mark represents in order to reveal something that should be on every Viking ship.

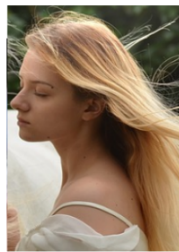
$$\begin{aligned} E + E &= P \\ I + P &= Y \end{aligned}$$



Frigg

$$H + D = ?$$

$$\begin{aligned} T + T &= M \\ D + E &= B \end{aligned}$$



Freya

$$M + T = ?$$

$$\begin{aligned} S + E &= Q \\ A + J &= G \end{aligned}$$



Odin

$$K + I = ?$$

$$\begin{aligned} A + G &= D \\ C + I &= F \end{aligned}$$



Thor

$$A + I = ?$$