



# December 2020 Answer Sheet

Welcome to Puzzled Pint!

## Tonight

- We're here to help! This is not a competitive event. Ask the Game Control volunteers (GC) for hints as often as you'd like. The goal is to have fun, not to be frustrated!
- **If your location is running virtual**, go to the location page (linked on puzzle download page) and find out how to contact your local GC.
- **If you are collaborating online with your teammates**: There is a Google Sheet this month! Download and make your own copy to collaboration on line together. It can be found on the page where you downloaded the puzzles.

## The Puzzles

- Each puzzle will solve to a short word or phrase. How? That's for you to discover.
- Need a code sheet or solving resources? Check out the Resources page on Puzzled Pint's webpage: <http://www.puzzledpint.com/resources/>
- You can use anything to help solve: Use your phone; the internet is fair game! Think your brother might have an insight? Give him a call!
- While each month has a theme, you need no special knowledge of the theme to solve.

## About Puzzled Pint

- How did tonight go? Email us at [Feedback@puzzledpint.com](mailto:Feedback@puzzledpint.com)
- We're an all-volunteer organization.
  - Help us run locally: Talk with Game Control about how you can volunteer.
  - Help us run globally: <https://www.patreon.com/PuzzledPint>

Puzzle Answers	
Who got what	
A Dolorous Din	
Evermean	
Least of a Feast	
Meta: Grinch in a Pinch	

Team Name:

Start Time:

---

Team Size:

End Time:

---



# Puzzled Pint

December 2020

## Intro (Not a Puzzle!)

© 2020 CC BY-NC-SA Intl. 4.0 Jimmy Chang (Los Angeles, CA/USA)

The gifts are missing! The tree's bare as can be!  
The table is empty and the carols, off-key!  
Who could have done this, this unspeakable sin,  
And ruined Whoville's Christmas before it could begin?

Why, we have the suspect, he's already been pinched.  
Who else could it be but the deplorable GRINCH!

Listen to him deny it, that green ne'er-do-well:  
"IT WASN'T ME!" he shouts through the bars of his cell.  
"Someone's set me up, besmirched my good name!  
I swear three times on my heart - I'VE BEEN FRAMED!"

The Grinch, innocent? Someone so vile and uncouth?  
And yet, what if...what if he's telling the truth?  
Let's examine the facts and follow the leads,  
And catch the true villain behind these misdeeds!





# Puzzled Pint

December 2020

# Who Got What

(Page 1 of 2)

© 2020 CC BY-NC-SA Intl. 4.0 Jimmy Chang (Los Angeles, CA/USA)

Twas Christmas morning! When Who girls and Who boys  
Wake to open their gifts and unbox their toys.  
But this year, I fear, might be sadder than most,  
Sadder than an old piece of leftover roast.

For they opened their gifts - and what a sorry affair!  
This wrapping paper was wrapping nothing but air!  
These boxes were empty, it couldn't be plainer;  
Someone had taken the gifts and left their containers!

But perhaps you can help and save the day,  
By rebuilding each gift in the following way:  
Each gift belongs to a Who (but which Who, who knows).  
You can find their gift tags strewn about down below.  
Put each name "in" a container (though jumbled a bit),  
To make a new word that reveals the original gift!

Here's an example, so you don't have to guess:  
In a GLASS for NED can be found GLADNESS!  
Solve this puzzle to answer without bluffing -  
What might some of these gifts end up becoming?





# Puzzled Pint

December 2020

# Who Got What

(Page 2 of 2)

© 2020 CC BY-NC-SA Intl. 4.0 Jimmy Chang (Los Angeles, CA/USA)

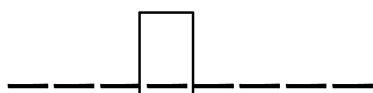
**BIN**



**TIN**



**POT**



**BOX**



**CARD**



**JAR**



**CASE**



The original gifts (in no particular order)

French wine

Hot dish

A painted likeness

A caretaker

Steak

A type of rug

Place for memos

TIRRA

AUDRE

SOREL

ERONDEL

TONI

BROOK

KESAR

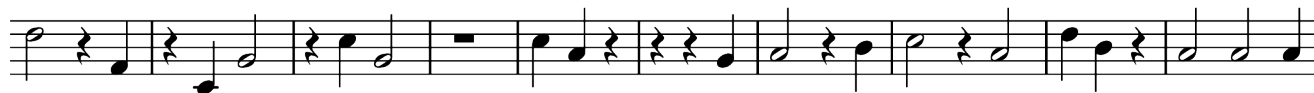
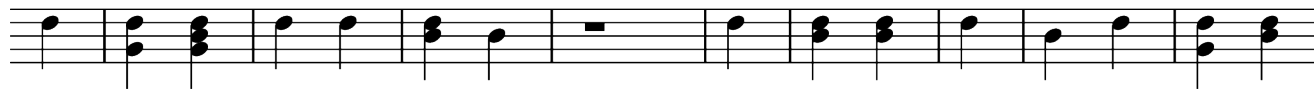


# Puzzled Pint

December 2020

## A Dolorous Din

© 2020 CC BY-NC-SA Intl. 4.0 Jimmy Chang and Chelsea Cullen  
(Los Angeles, CA/USA)



Add another crime to the Christmas crook's wrongs:  
The thief's gone and ruined all of Whoville's songs!  
Their carols are off-kilter, off-beat and off-key,  
It's complete and utter cacophony!  
Work through the tunes to \*hear\* the sounds underneath,  
And learn the item of note taken by the thief!

### Legend:

z = 1 count rest

— = whole measure rest

♪ = 1 count note

♪ = 2 count note



# Puzzled Pint

December 2020

# Evermean

(Page 1 of 2)



© 2020 CC BY-NC-SA Intl. 4.0 Jimmy Chang (Los Angeles, CA/USA)

The tree's been pilfered! It's been stripped all a-bare,  
Not a bauble or whatzit or googaw hangs there.  
Good thing we have more trinkets to put on this pine,  
But the Whos have some thoughts about festive design...



Follow the rules below to redress this tree,  
And then put your mind to a new mystery!  
With the baubles back up, please help us diagnose -  
What kind of ornament does the culprit hate most?

You won't find them here, but perhaps if you try,  
You'll find the answer twinkling down from on high.


## Rules for Festive Design


1. There are four types of ornaments:

Stars ✨, Circles ○, Diamonds ◇, and Canes 7. Of each, there are exactly  
5 Stars, 4 Circles, 6 Diamonds, and 5 Canes to be placed on this tree.

Ornaments are placed at spots , and a spot is connected to another spot if there  
is a line  running between them.

Additionally, there are two other kinds of decoration:

2. Garlands  always connect two of the same type of ornament. Conversely, any  
ornament which is connected to another ornament of the same type **MUST** be connected  
by a garland.

3. Lights  are always connected to a Circle at one or the other end.

4. Every Circle is directly connected to at least one Star.

5. Every Diamond must be connected to a Cane lower than it, and every Cane must be  
connected to a Diamond higher than it.

6. Canes are *\*never\** connected to each other.

7. Stars can only be placed at spots connected to all three of the other ornament types.

To get you started, the first Star has been placed at the top of the tree (as is proper).



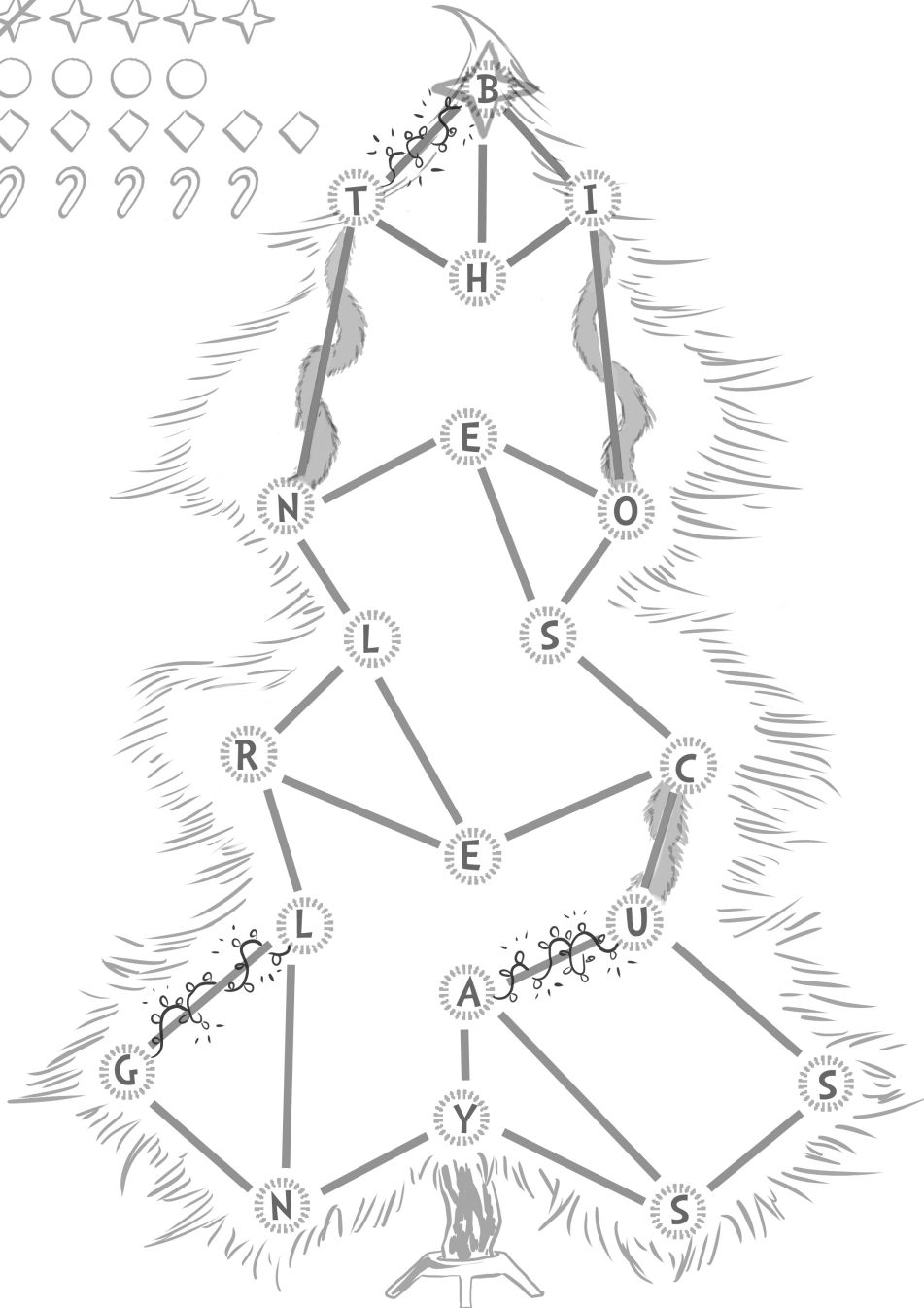
# Puzzled Pint

December 2020

# Evermean

(Page 2 of 2)

© 2020 CC BY-NC-SA Intl. 4.0 Jimmy Chang (Los Angeles, CA/USA)





# Puzzled Pint

December 2020

## Least of a Feast

© 2020 CC BY-NC-SA Intl. 4.0 Jimmy Chang (Los Angeles, CA/USA)



**OATS**  
Start with some nautical vessels.  
**Chop.** Serve.

**BREAD**  
Lay out a wide span.  
**Trim. Trim** again. Serve.

**CANDY**  
Take something useful;  
**chill.** Serve.

**PIE**  
Collect some laboratory tools used for transferring liquids.  
**Strain. Trim** once; you should now have a Dutch painter in your bowl. **Trim** again. Serve.

**SALMON**  
Take an edible nut. **Trim**, then add 1 tsp of salt. Serve.  
Tip: if you're ever running low on the starting ingredient, simply add 7 tsp of salt to it and you'll have more!

**PECAN**  
Carefully catch a striped predator, and **ROasT** for 22 minutes. Serve.  
Tip: due to the Maillard reaction, **roasting** is a process that transforms every part of a dish. When **roasting**, be sure to *rotate* every element of an ingredient so that it evenly cooks by the appropriate amount. Be sure not to **roast** anything for too long, however; if you take the PECAN and **roast for another 4 minutes**, you'll end up with a very angry beast again!

**SUPPER**  
Start with something excellent!  
**Add 3 (or 4!) tsp of pepper.** Serve.  
Tip: if you need a utensil for this dish, **add 2 tsp of pepper** to something happening promptly.

**GUM**  
Feel self-satisfied.  
**Chop**, then **stir.** Serve.  
Tip: **stirring** only affects the ends of an ingredient.

**SALAD**  
Begin with pasta. **Chop**, then **roast for 3 minutes.** **Bread** the result, then **roast for another 15 minutes.** Serve.  
Tip: **breadding** involves wrapping something in "dough"! (Or at least the kind that Rachael "Re" would use)

**FOOD**  
Start with sustenance for farm animals; **boil.** Serve.  
Tip: **boiling** heats up air in an ingredient until it bubbles!  
**Boil BAIT** to get some footwear!

**NOODLE**  
Start with a hair color. **Chop. Trim. Stir**; take what remains, and **mix** with a sung poem. Serve.  
Tip: the order you **mix** things matters; **mixing** MN and AE will result in long hair, while **mixing** AE and MN will result in an exclamation.

It's no surprise the feast was ruined as well (Though stolen or eaten, one couldn't quite tell).  
This was the full menu, save for one dish:  
What holy plate was left off the list?

To the left are a number of recipes, each containing one or more cooking instructions in bold. Every recipe starts with a one-word ingredient.

The answer to this puzzle is the name of the final recipe.

?????????  
Start with CHEESE. **Chill. Trim**, then **chop. Stir** and **chop** again. **Boil**, then place in oven to **roast for 21 minutes.** Once complete, **add 1 tsp of pepper** to the dish, then **roast again for 5 minutes.** Add 5 tsp of salt, then set aside.  
Next, take a MELON. **Chop**, then **roast for 18 minutes.** **Bread** the dish, and **strain** it before **roasting it for another 8 minutes.** **Stir** once, **trim**, then **roast for 12 minutes.**  
Taking the first dish that you set aside, **mix with the second dish** and **roast for a final 12 minutes.** Serve.





**Puzzled  
Pint** META

December 2020

# Grinch in a Pinch

© 2020 CC BY-NC-SA Intl. 4.0 Jimmy Chang (Los Angeles, CA/USA)

This is it, we've gathered all the clues,  
Now we identify the culprit to accuse!  
Was it the Grinch? Though he may be shifty,  
**Draw your connections** and uncover the guilty!

2 \_HU\_ 1

1 \_RI\_ 2

3 \_ND\_ 2

1 \_RA\_ 2

4 \_EA\_ 3

1 \_OI\_ 2

2 \_RB\_ 3

3 \_ND\_ 4

Drink quickly

Morbid

Erase

Stuff

Edible seed

Wind up

Spheres

Finishes



\_\_\_\_\_



\_\_\_\_\_



\_\_\_\_\_



\_\_\_\_\_



**Puzzled  
Pint** **BONUS**

December 2020

# The Digging-est Dog

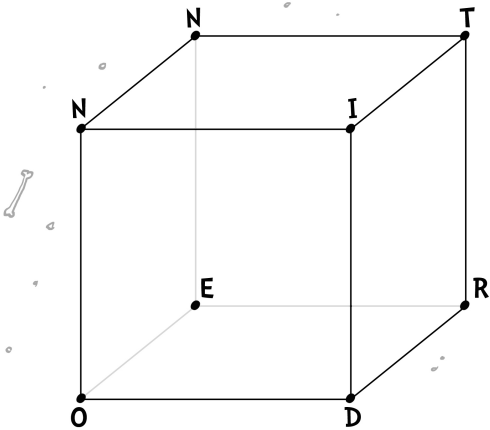
(Page 1 of 2)

© 2020 CC BY-NC-SA Intl. 4.0 Jimmy Chang (Los Angeles, CA/USA)

Why did he do it? Why did Max frame  
The Grinch with all of this undeserved blame?  
Max isn't telling (aside from a growl and a bark),  
But good news! No need to be left in the dark:  
We've found the stolen goods, buried very near,  
And maybe buried with them, the answer is here!  
Trace his path through the dirt - you can do it, detective,  
Although you may need a change of perspective!

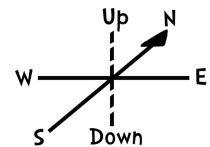
These cubes represent the volumes of dirt in which Max hid his stolen goods. The cubes are comprised of lettered points, which either sit on an edge of the cube or on one of the cube's faces (as indicated by a diamond).

For each cubic volume of dirt, Max starts at one of the lettered points. When digging through the dirt, Max always moves in a straight line from point to point, and only in the cardinal directions (N, S, E, W) and up or down, as indicated by the compass rose. Max never returns to a point that he's already visited.



This was left without a dip

-----





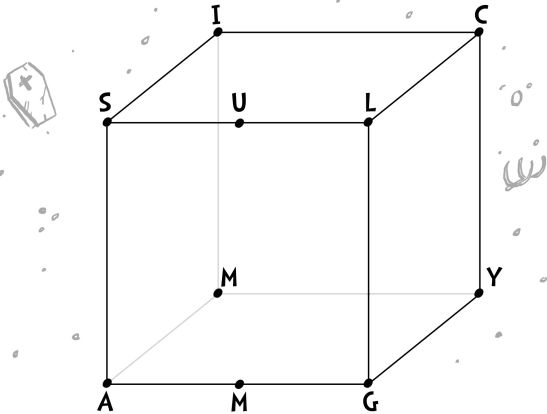
# Puzzled Pint

December 2020

# The Digging-est Dog

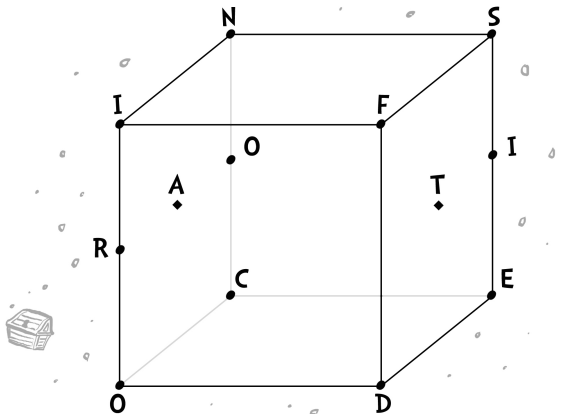
(Page 2 of 2)

© 2020 CC BY-NC-SA Intl. 4.0 Jimmy Chang (Los Angeles, CA/USA)



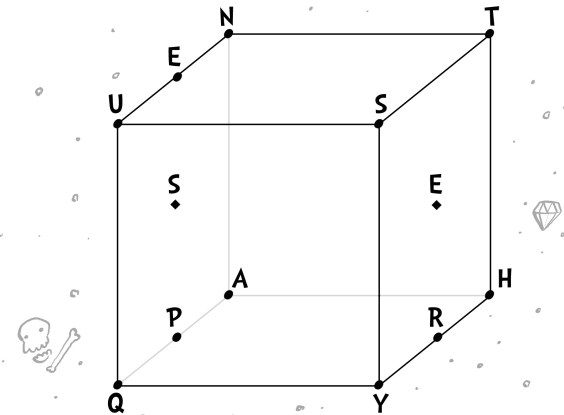
This was missing something key

-----



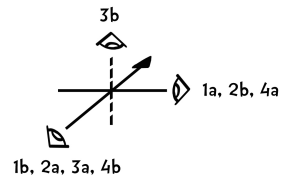
These were torn limb from limb

-----



And these were all empty

-----





# Meta-Meta My Hope For 2021

*This year, instead of a vision, all I have is hope.*

$$A + A = B$$

$$C + D = G$$

- Jan 2020: A GAME OF CAT AND TOUCHSCREEN
- Feb 2020: WHO WANTS ANOTHER ROUND
- Mar 2020: STOLE
- Apr 2020: ALCHEMIST
- May 2020: WHO'S FINISHED? YOU IS WHO
- Jun 2020: WORLDS COLLIDE
- Jul 2020: HOLD A PUZZLE, RAISE A PINT, AND GIVE A CHEER
- Aug 2020: CAKE
- Sep 2020: TOP BILLING
- Oct 2020: JUST ONE MORE TRIP AROUND THE SUN
- Nov 2020: THE SISTER DID IT
- Dec 2020: \_\_\_\_\_

$$X + Y + Z = W$$

$$Q - R = Y$$

[Six letters]	___ + ___ + ___ + ___ + ___ + ___	=	<div style="border-bottom: 1px solid black; height: 20px; margin-bottom: 5px;"></div> <div style="border-bottom: 1px solid black; height: 20px; margin-bottom: 5px;"></div> <div style="border-bottom: 1px solid black; height: 20px; margin-bottom: 5px;"></div> <div style="border-bottom: 1px solid black; height: 20px; margin-bottom: 5px;"></div> <div style="border-bottom: 1px solid black; height: 20px; margin-bottom: 5px;"></div> <div style="border-bottom: 1px solid black; height: 20px; margin-bottom: 5px;"></div>
	(October)		
[Four letters]	___ + ___ - ___ - ___	=	
	(August)		
[Three letters]	___ + ___ + ___ + ___ - ___ - ___	=	
	(September) (December)		
[Seven letters]	___ - ___ + ___ + ___ - ___ + ___ - ___	=	
	(February)		
[Two letters]	___ + ___ + ___ - ___	=	
	(November) (May)		
[Five letters]	___ + ___ + ___ - ___ - ___	=	
	(March)		